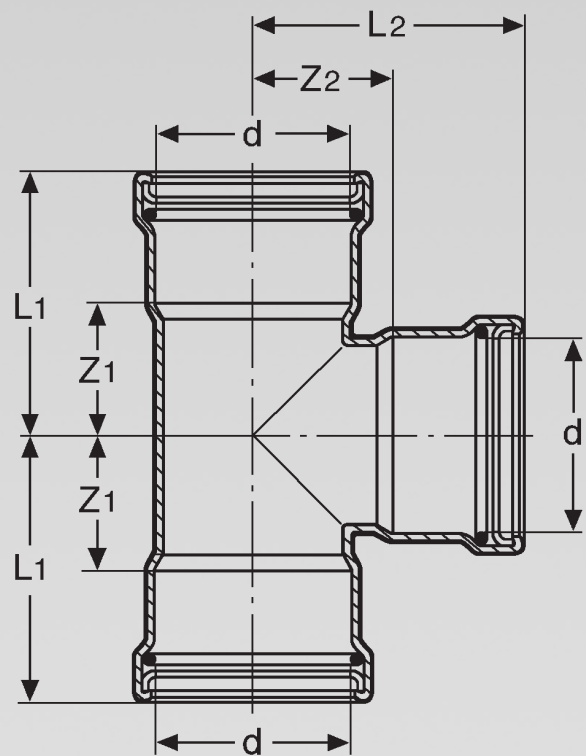
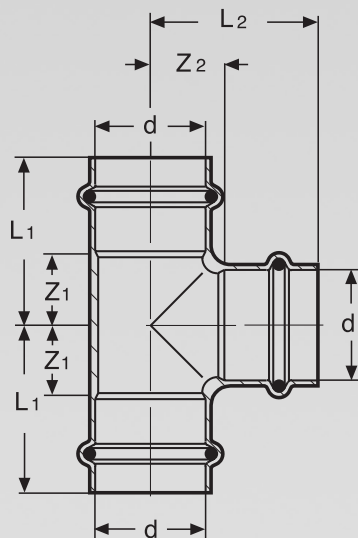


# Take Off Dimensions

Pipe line systems / Pipe connection technology

**Propress G with Smart Connect™**

08.2/2014



### **Pipe line systems/Pipe connection technology** **Propress G with Smart Connect™**

The Viega Propress G system integrates state-of-the-art press-fit technology and purpose designed fittings to deliver the most efficient and reliable copper tube connection method.

Propress G™ fittings also incorporate the Viega patented Smart Connect™ feature. This feature provides an easy method for locating un-pressed fittings by providing a positive leakage point during testing from any non pressed fitting. When the fitting is pressed, the Smart Connect™ feature is closed, forming a permanent leak proof joint.

Comprehensive choice of pipe connectors to suit a range of installation and connection needs for use with copper tube complying with AS 1432.

#### Propress G areas of application:

Natural Gas

LP Gas

Mixed Gases

Fuel Oil (for heating applications)

Please consult the technical documentation for specification of the maximum operating temperatures and pressure levels for each area of application.

Viega GmbH & Co. KG  
Plumbing and heating systems  
Viega Platz 1  
57439 Attendorn  
Germany

Viega Pty Limited  
Norwest Central  
Suite 102  
8 Century Circuit  
Baulkham Hills  
NSW 2153  
Australia  
Ph:+61 2 8858 2600

[ausupport@viega.com.au](mailto:ausupport@viega.com.au)  
[www.viega.com.au](http://www.viega.com.au)

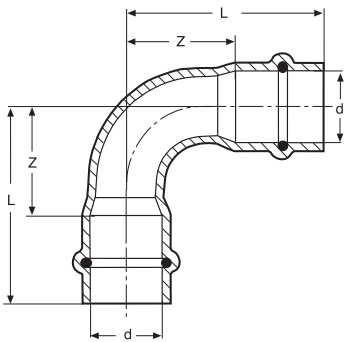


Contents of product names

Elbow 90° . . . . .6  
Elbow 90° . . . . .6  
Elbow 90° . . . . .6  
Elbow 90° . . . . .6  
Back-plated Female Elbow . . . . .7  
Back-plated Male Elbow . . . . .7  
Elbow 45° . . . . .7  
Elbow 45° . . . . .7  
Elbow 45° . . . . .8  
Elbow 45° . . . . .8  
Tee & Reducing Tee. . . . .8  
Tee & Reducing Tee. . . . .9  
Tee Adaptor. . . . .9  
Male line Adaptor. . . . .9  
Female line Adaptor . . . . .9  
Flange. . . . .10  
Cap . . . . .10  
Cap . . . . .10  
Union . . . . .10  
Union . . . . .11  
Coupling with Stops . . . . .11  
Coupling with Stops . . . . .11  
Repair Coupling. . . . .11  
Repair Coupling. . . . .12  
Reducing Coupling . . . . .12  
Reducing Coupling . . . . .12  
Reducer. . . . .13  
Reducer. . . . .13

art. no.	page	art. no.	page	art. no.	page	art. no.	page
580 124 .....	11	580 704 .....	10	623 289 .....	13		
580 131 .....	11	580 711 .....	10	623 388 .....	13		
580 148 .....	11	580 728 .....	7	623 395 .....	13		
580 155 .....	11	580 735 .....	7	623 401 .....	13		
580 162 .....	11	622 749 .....	11	623 418 .....	13		
580 179 .....	11	622 756 .....	11	623 425 .....	13		
580 186 .....	12	622 763 .....	11	624 644 .....	12		
580 193 .....	12	622 770 .....	12	624 651 .....	12		
580 209 .....	12	622 787 .....	12	624 668 .....	12		
580 216 .....	12	622 794 .....	12	624 675 .....	12		
580 223 .....	12	622 800 .....	12	624 682 .....	12		
580 230 .....	11	622 817 .....	12	624 699 .....	12		
580 247 .....	11	622 824 .....	12	624 705 .....	12		
580 254 .....	11	622 831 .....	12	624 712 .....	12		
580 261 .....	11	622 848 .....	12	624 729 .....	8		
580 278 .....	11	622 855 .....	12	624 736 .....	8		
580 285 .....	11	622 862 .....	12	624 743 .....	8		
580 292 .....	6	622 879 .....	12	624 750 .....	8		
580 308 .....	6	622 886 .....	6	624 767 .....	8		
580 315 .....	6	622 893 .....	6	624 774 .....	8		
580 322 .....	6	622 909 .....	6	624 781 .....	10		
580 339 .....	6	622 916 .....	6	624 798 .....	10		
580 346 .....	6	622 923 .....	6	624 804 .....	10		
580 353 .....	6	622 930 .....	6	624 811 .....	10		
580 360 .....	6	622 947 .....	9	624 828 .....	11		
580 377 .....	6	622 954 .....	9	624 835 .....	11		
580 384 .....	6	622 961 .....	9	624 842 .....	11		
580 391 .....	6	622 978 .....	9	624 859 .....	10		
580 407 .....	6	622 985 .....	9	625 702 .....	10		
580 414 .....	9	622 992 .....	9	625 740 .....	10		
580 421 .....	9	623 005 .....	9	626 457 .....	10		
580 438 .....	9	623 012 .....	9	634 070 .....	7		
580 445 .....	9	623 029 .....	9	635 473 .....	12		
580 452 .....	9	623 036 .....	9	668 990 .....	8		
580 469 .....	9	623 043 .....	9	669 065 .....	13		
580 476 .....	9	623 050 .....	9	669 072 .....	13		
580 483 .....	9	623 067 .....	9	669 089 .....	13		
580 490 .....	9	623 074 .....	9	669 096 .....	13		
580 506 .....	8	623 081 .....	9	669 102 .....	13		
580 513 .....	8	623 098 .....	7	669 119 .....	13		
580 520 .....	8	623 104 .....	7	701 475 .....	8		
580 537 .....	8	623 111 .....	7				
580 544 .....	8	623 128 .....	8				
580 551 .....	8	623 135 .....	8				
580 568 .....	8	623 142 .....	8				
580 575 .....	8	623 159 .....	10				
580 582 .....	8	623 166 .....	10				
580 599 .....	8	623 173 .....	10				
580 605 .....	8	623 180 .....	10				
580 612 .....	8	623 197 .....	10				
580 629 .....	7	623 203 .....	10				
580 636 .....	7	623 210 .....	13				
580 643 .....	7	623 227 .....	13				
580 650 .....	7	623 234 .....	13				
580 667 .....	8	623 241 .....	13				
580 674 .....	8	623 258 .....	13				
580 681 .....	8	623 265 .....	13				
580 698 .....	8	623 272 .....	13				

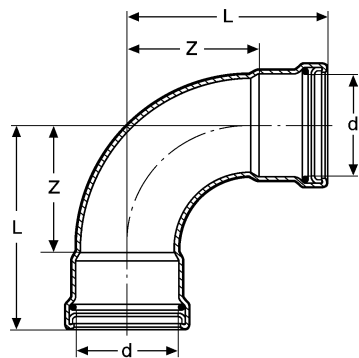




Elbow 90°

copper  
model 0816

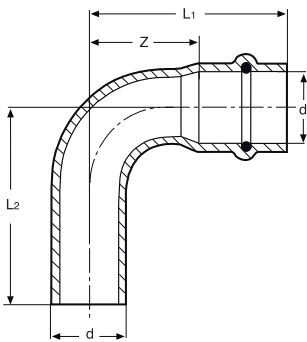
art. no.	d (DN)	L	Z
580292	15	32	14
580308	20	44	22
580315	25	54	31
580322	32	60	35
580339	40	77	46
580346	50	100	61



Elbow 90°

copper  
model 0816XL

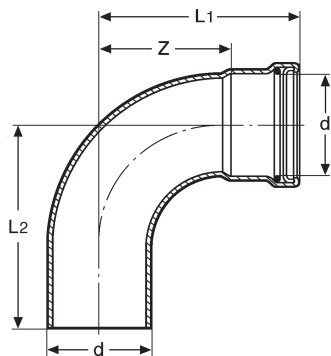
art. no.	d (DN)	L	Z
622886	65	127	84
622893	80	149	99
622909	100	183	123



Elbow 90°

copper  
model 0816.1

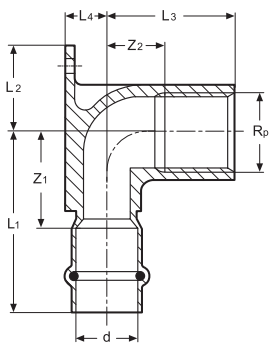
art. no.	d (DN)	L1	L2	Z
580353	15	32	34	14
580360	20	44	47	22
580377	25	54	56	31
580384	32	60	62	35
580391	40	77	79	46
580407	50	100	102	61



Elbow 90°

copper  
model 0816.1XL

art. no.	d (DN)	L1	L2	Z
622916	65	127	126	84
622923	80	149	147	99
622930	100	183	178	123

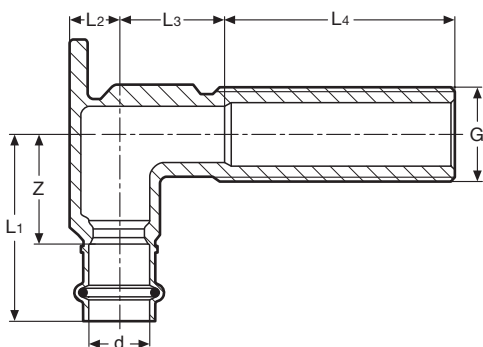


### Back-plated Female Elbow

bronze

model 0825.5

art. no.	d (DN)	Rp	L1	L2	L3	L4	Z1	Z2
580728	15	1/2	43	20	11	22	25	11
580735	20	3/4	48	25	15	22	26	15

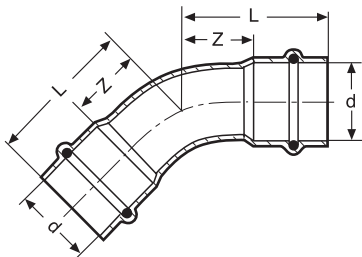


### Back-plated Male Elbow

bronze

model 0832.1

art. no.	d (DN)	G	L1	L2	L3	L4	Z
634070	15	1/2	43	11	20	55	25

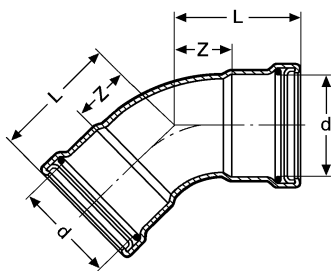


### Elbow 45°

copper

model 0826

art. no.	d (DN)	L	Z
580629	25	36	13
580636	32	40	15
580643	40	50	19
580650	50	64	25

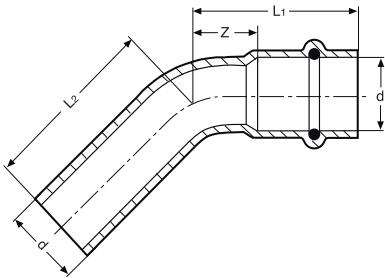


### Elbow 45°

copper

model 0826XL

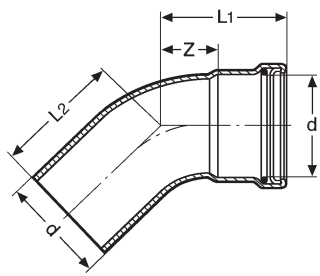
art. no.	d (DN)	L	Z
623098	65	82	39
623104	80	96	46
623111	100	118	58



**Elbow 45°**

copper  
model 0826.1

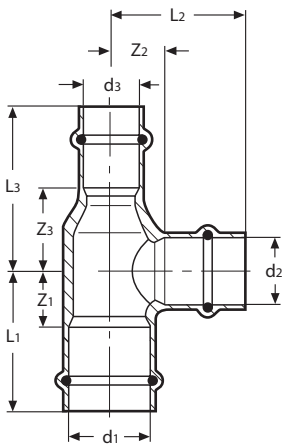
art. no.	d (DN)	L1	L2	Z
580667	25	36	38	13
580674	32	40	42	15
580681	40	50	52	19
580698	50	64	66	25



**Elbow 45°**

copper  
model 0826.1XL

art. no.	d (DN)	L1	L2	Z
623128	65	82	82	39
623135	80	96	93	46
623142	100	118	113	58



**Tee & Reducing Tee**

copper  
model 0818

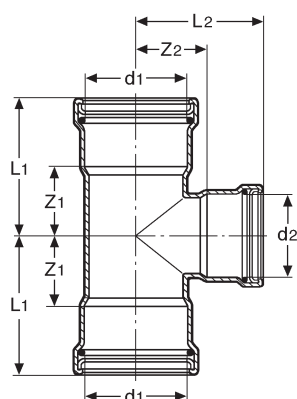
art. no.	d1 (DN)	d2 (DN)	d3 (DN)	L1	L2	L3	Z1	Z2	Z3
580506	15	15	15	33	33	28	15	15	10
580520	20	15	15	37	41	32	15	23	14
701475	20	20	15	42	43	42	20	25	20
580537	20	15	20	39	39	32	17	17	14
580513	20	20	20	42	42	36	20	20	14
624729	25	15	25	39	39	36	16	16	18
580582	25	20	25	43	43	40	20	20	18
580544	25	25	25	46	46	41	23	23	18
624736	32	15	32	40	40	39	16	16	21
668990	32	20	32	44	44	43	19	19	21
580599	32	25	32	47	47	44	22	22	21
580551	32	32	32	50	50	47	26	26	22
624743	40	25	40	52	52	50	21	21	27
580605	40	32	40	55	55	52	24	24	27
580568	40	40	40	58	58	58	27	27	27
624750	50	20	50	57	57	56	18	18	34
624767	50	25	50	60	60	57	21	21	34
624774	50	32	50	63	63	59	24	24	34
580612	50	40	50	66	66	65	27	27	34
580575	50	50	50	73	73	73	34	34	34



## Tee & Reducing Tee

copper

model 0818XL

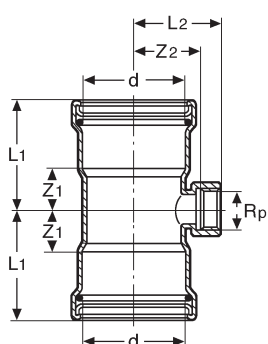


art. no.	d1 (DN)	d2 (DN)	L1	L2	Z1	Z2
623036	65	50	84	84	41	45
623005	65	65	89	91	46	48
623043	80	50	90	90	40	51
623050	80	65	93	96	43	53
623012	80	80	101	103	51	53
623067	100	50	105	103	45	64
623074	100	65	105	110	45	67
623081	100	80	112	117	52	67
623029	100	100	128	128	68	68

## Tee Adaptor

copper

model 0817.2XL

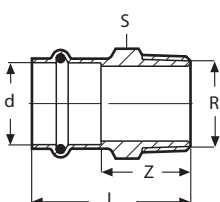


art. no.	d (DN)	Rp	L1	L2	Z1	Z2
622947	65	¾	70	58	27	45
622954	65	2	84	67	41	49
622961	80	¾	77	64	27	52
622978	80	2	90	74	40	56
622985	100	¾	88	76	28	64
622992	100	2	101	86	41	68

## Male line Adaptor

bronze

model 0811

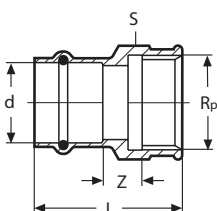


art. no.	d (DN)	R	L	Z	S
580445	15	½	42	24	22
580452	20	¾	48	26	27
580469	25	1	54	31	34
580476	32	1¼	56	31	43
580483	40	1½	66	35	50
580490	50	2	79	40	68

## Female line Adaptor

bronze

model 0812



art. no.	d (DN)	Rp	L	Z	S
580414	15	½	41	8	26
580421	20	¾	44	10	31
580438	25	1	49	12	38

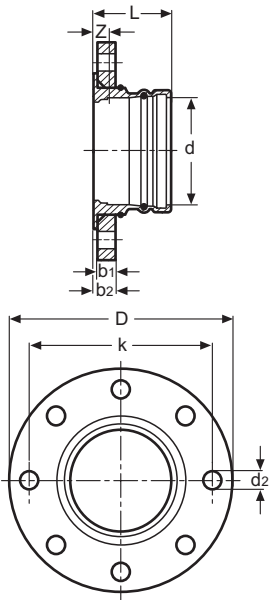
Flange

copper

model 0859.5XL

art. no.	d (DN)	L	Z	b1	b2	D	d2	k	n
623 180	65	72	29	16	18	165	18	127	4
623 197	80	78	28	16	18	185	18	146	4
623 203	100	92	32	16	21	215	18	178	8

n = no. of bolt holes in the circle

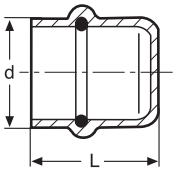


Cap

copper

model 0856

art. no.	d (DN)	L
580 704	15	24
580 711	20	28
624 781	25	29
624 798	32	33
624 804	40	37
624 811	50	45

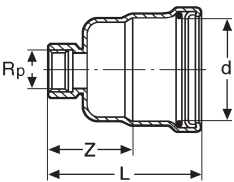


Cap

copper

model 0856XL

art. no.	d (DN)	Rp	L	Z
623 159	65	¾	101	46
623 166	80	¾	107	45
623 173	100	¾	118	46

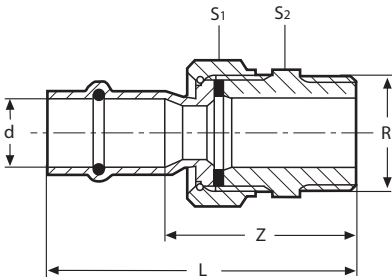


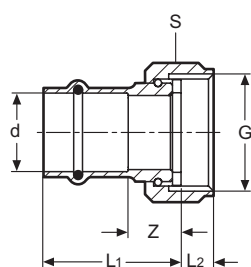
Union

bronze

model 0865

art. no.	d (DN)	R	L	Z	S1	S2
624 859	25	1	81	58	50	44
625 702	32	1¼	85	60	52	50
626 457	40	1½	92	61	60	55
625 740	50	2	113	74	78	72



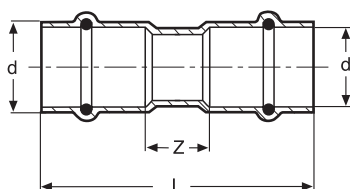


## Union

bronze

model 0863

art. no.	d (DN)	G	L1	L2	Z	S
624 828	15	1/2	37	6	11	24
624 842	20	1/2	47	9	16	24
624 835	20	3/4	45	9	13	30

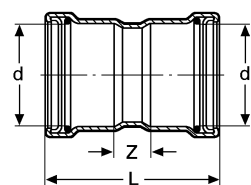


## Coupling with Stops

copper

model 0815

art. no.	d (DN)	L	Z
580 124	15	43	7
580 131	20	53	9
580 148	25	56	10
580 155	32	60	11
580 162	40	72	10
580 179	50	88	10

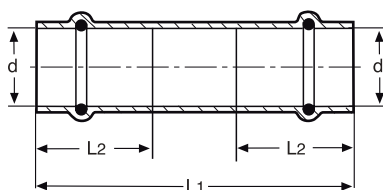


## Coupling with Stops

copper

model 0815XL

art. no.	d (DN)	L	Z
622 749	65	110	24
622 756	80	125	25
622 763	100	147	27

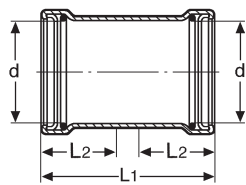


## Repair Coupling

copper

model 0815.5

art. no.	d (DN)	L1	L2
580 230	15	43	18
580 247	20	53	22
580 254	25	56	23
580 261	32	60	25
580 278	40	72	31
580 285	50	88	39

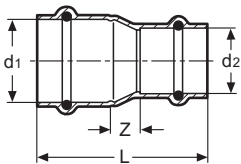


**Repair Coupling**

copper

model 0815.5XL

art. no.	d (DN)	L1	L2
622 855	65	110	43
622 862	80	125	50
622 879	100	147	60

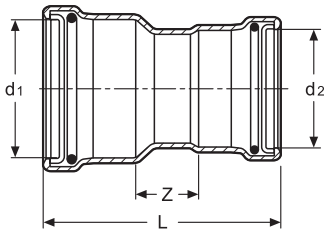


**Reducing Coupling**

copper

model 0815.2

art. no.	d1 (DN)	d2 (DN)	L	Z
580 186	20	15	50	10
624 644	25	15	58	17
580 193	25	20	56	11
624 651	32	15	67	24
624 668	32	20	65	18
580 209	32	25	62	14
624 682	40	20	78	25
624 675	40	25	72	18
580 216	40	32	67	11
624 699	50	20	100	39
624 705	50	25	94	32
624 712	50	32	89	25
580 223	50	40	89	19

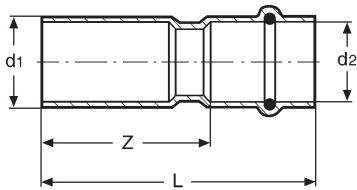


**Reducing Coupling**

copper

model 0815.2XL

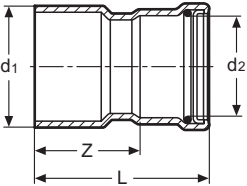
art. no.	d1 (DN)	d2 (DN)	L	Z
622 848	65	32	111	43
622 770	65	40	116	42
622 787	65	50	117	35
622 794	80	40	129	48
622 800	80	50	126	37
622 817	80	65	130	37
622 824	100	50	154	55
635 473	100	65	154	51
622 831	100	80	154	44



Reducer

copper  
model 0815.1

art. no.	d1 (DN)	d2 (DN)	L	Z
623388	20	15	55	37
623395	25	15	63	45
623401	25	20	59	37
623418	32	20	69	47
623425	32	25	62	39
669065	40	20	78	56
669072	40	25	72	49
669089	40	32	67	42
669096	50	25	95	72
669102	50	32	89	64
669119	50	40	87	56



Reducer

copper  
model 0815.1XL

art. no.	d1 (DN)	d2 (DN)	L	Z
623210	65	40	106	75
623227	65	50	96	57
623234	80	40	131	100
623241	80	50	133	94
623258	80	65	135	92
623265	100	50	156	117
623272	100	65	158	115
623289	100	80	157	107

