



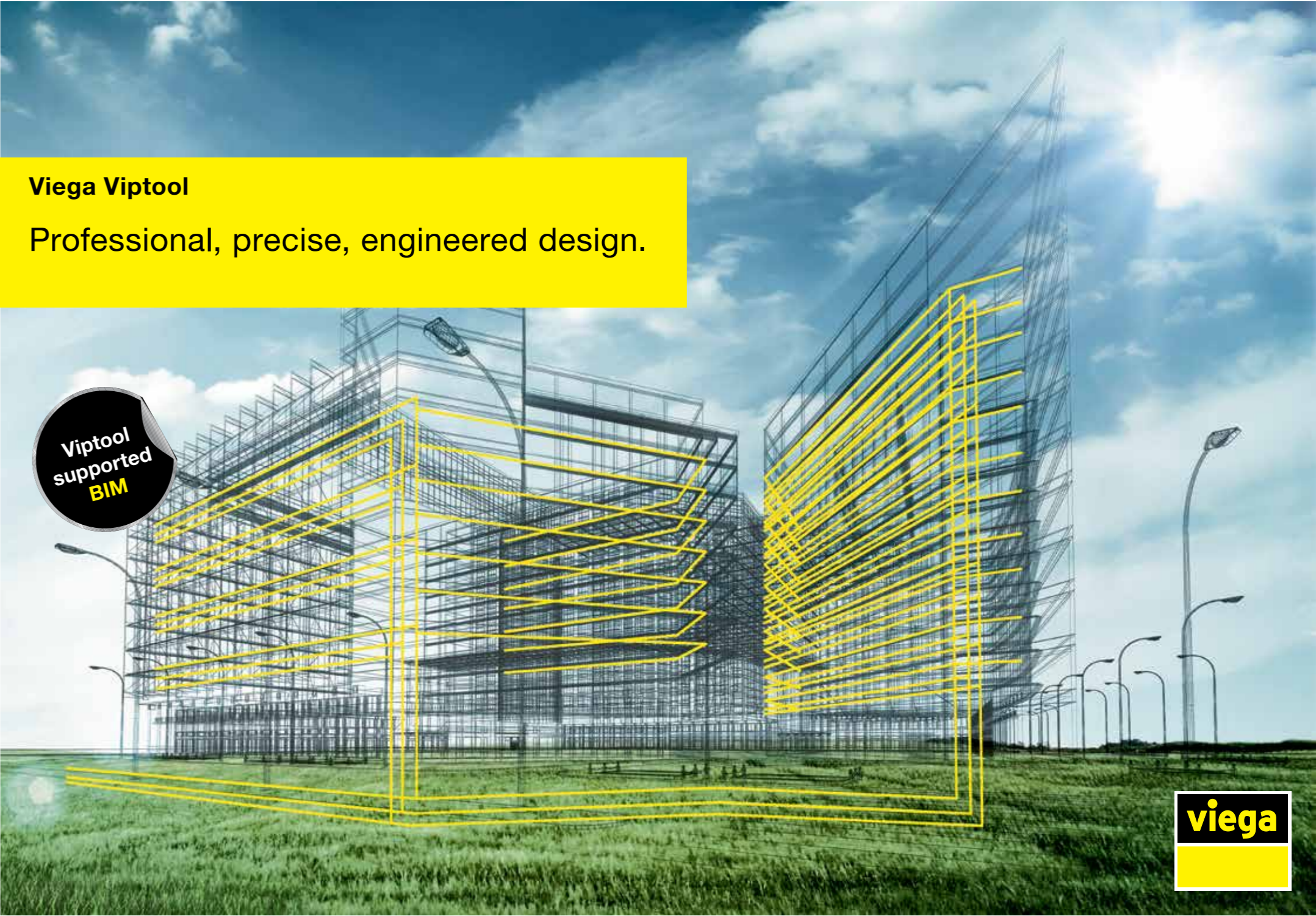
**Viega Pty Ltd**  
PO Box 141  
North Ryde BC NSW 1670  
**Technical Support**  
Ph: 1800 484 342  
[support@viega.com.au](mailto:support@viega.com.au)  
[www.viega.com.au](http://www.viega.com.au)

**viega**

**Viega Viptool**

Professional, precise, engineered design.

Viptool  
supported  
**BIM**



**viega**

## Viega Software Solutions

# HIGHEST QUALITY BEGINS AT THE PLANNING STAGE.

As the market leader in press connection technology, Viega strives to make technical installations better and safer, more economical and easier. Therefore, the company invests a lot of time and effort in the development of its products to the highest quality. At the same time, Viega, as a leader in innovation, also looks to broadening its expertise and breaking completely new ground. This has resulted in the development of Viega's comprehensive software solution -Viptool, with which architects, specialist planners and skilled tradesmen are optimally supported right from the planning stage.

### At A Glance

There is a lot to consider when planning buildings. Not only must standards and regulations be observed, but also questions concerning energy efficiency, drinking water quality and economic efficiency. With Viega Viptool Software Products there is one simple solution: all programs and modules include the latest standards and regulations, and use these directly in the calculations. They also make it possible to be particularly energy-efficient and - in the case of drinking water installations – hygienic. All Viega product data is available from the planning stage in the program libraries and are also used to create calculations. With Viega you can plan holistically and accurately down to the smallest detail of a small-detached house or a very large project.

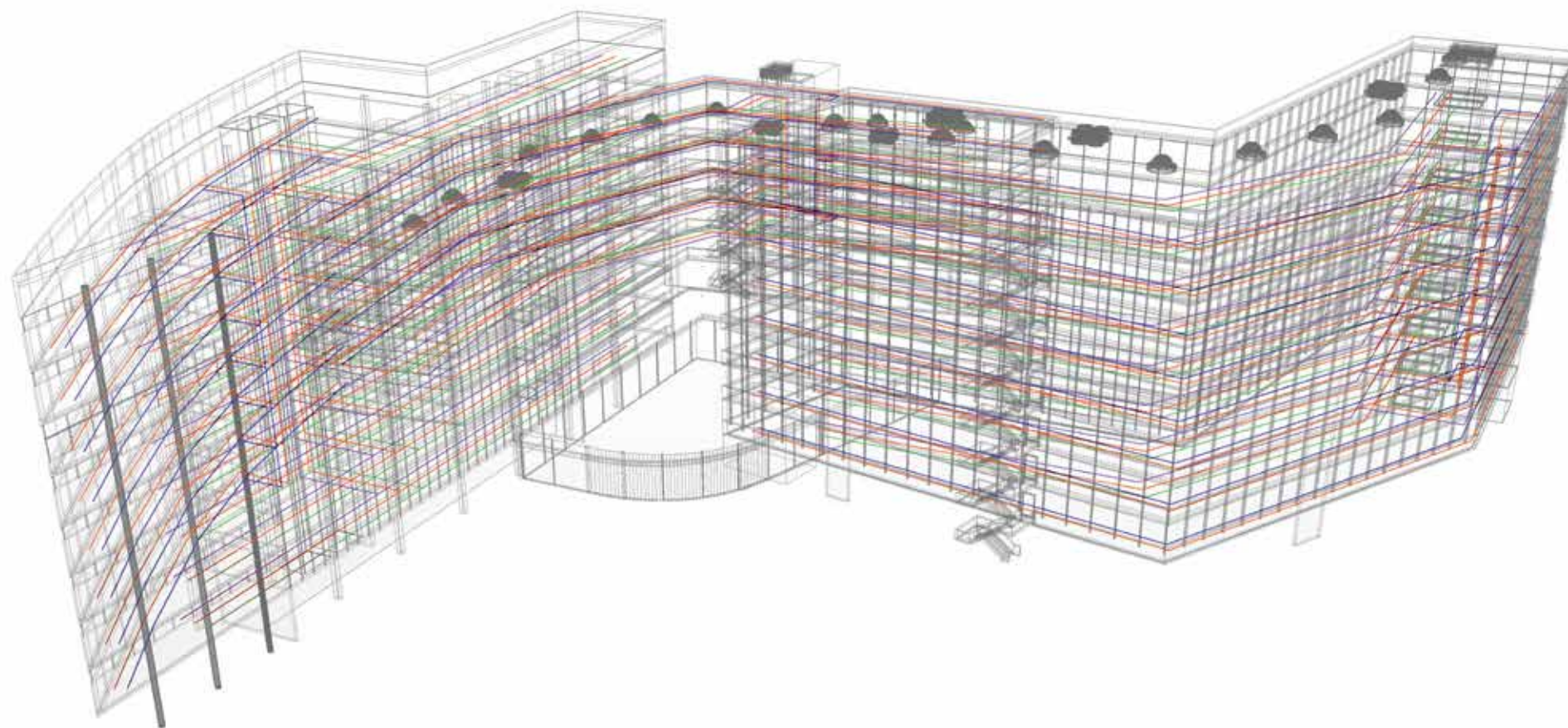
### Always There for You

Comprehensive software is only as good as its support. Whether a technical hurdle or just a question about operation - to get the most out of any software, you need a strong partner who is quick and responsive and precise. Viega Viptool offers a particularly comprehensive service with personal support. While in the practical seminars you will learn all about Viptool functions from the ground up, the experienced Software Hotline Staff are at your disposal any time so you can get on with your daily work. Especially helpful: On request our employees can also watch a live broadcast of the help directly to your computer.

### Together and Across Trades

It is well known that every detail is important in the planning process. At the same time, however, it's essential for projects to work across all the trades participating. Because no matter how detailed and correct one part of the project is – if it does not fit with the other trades, nothing works. The Viptool software solutions therefore do not only enable precise planning, but also fit seamlessly into the new way of working with Building Information Modeling - in short BIM - a product that is becoming increasingly popular in the construction industry. A common data model forms the basis for the planning and management of buildings to fundamentally improve the quality of our service. A decisive advantage to which Viega makes a decisive contribution with Viptool.





- CW – Cold Water
- HW – Hot Water
- HWC – Hot Water Circulation

Software Solutions for Planning

IMAGINE LIFE IN THIS DAY  
AND AGE WITHOUT IT.

The plumbing and mechanical services industry is in a constant state of change and is constantly confronted with new challenges. It is not only inventions, product innovations or improved techniques that are constantly changing. The abundance of guidelines is constantly increasing; standards and regulations are becoming more and more extensive. It's therefore increasingly difficult for tradesmen and planners to keep every detail in mind.

You Can Count On It

An exact planning tool for technical installations in buildings is therefore indispensable. Software solutions are important tools, which will help you in planning and offer you day-to-day work support. This ensures the greatest possible planning security and thus guarantees hygienic, energy-efficient, and above all, economical installations. Additionally they enable the optimal outcome generation, with every detail already considered.

Thanks to Viega “A better idea.”

Viega not only knows the the mechanical services industry very well, but is also an innovation leader in the industry. So it's no wonder that the company is also a leader in Software Solutions. Viega Viptool software packages are exactly tailored to the respective needs of skilled craftsmen and planners. Thus they offer numerous useful functions and tools for planning. The applications provide for standard-compliant and practicable installations and are equipped with numerous functions that make your daily work easier.



REASONS FOR VIEGA VIPTOOL

- Individually tailored to the needs of skilled craftsmen and planners with coordinated solutions.
- Economical and reliable planning through exact and reliable calculations.
- Detailed bills of materials for quotations and tenders.
- Comprehensive service, such as free ongoing support.
- Cost-effective to purchase.





## Viptool Engineering

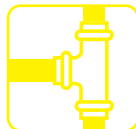
# THE DIGITAL PLANNING TOOLBOX OF THE ENTIRE BUILDING.

With Viptool Engineering you can safely and reliably plan building service systems in 2D and 3D. The extensive modules support you from design to execution planning and enable smooth integration into the BIM workflow. Current standards and legal requirements are automatically taken into account by the software, and all of the important details. In addition, all modules are compatible with each other and have a standard operating concept. No matter which module you are currently working in, you will be able to integrate with other modules. This maximum ease of use and effectiveness enables a smooth workflow.



### Viptool CAD-Module

The basic module is the basis of the planning software. On a CAD basis, it enables an exact, individual and easy planning.



### Viptool Piping

In addition to the Viptool CAD Module, you can use Viptool Piping – all calculations of pipe networks will be carried across. The program allows you to plan in 2D schematic or floor plan or in 3D building model.



### Viptool Software Maintenance

With yearly updates of your software you are always up to date with the latest state of the art technology, specific to your needs.



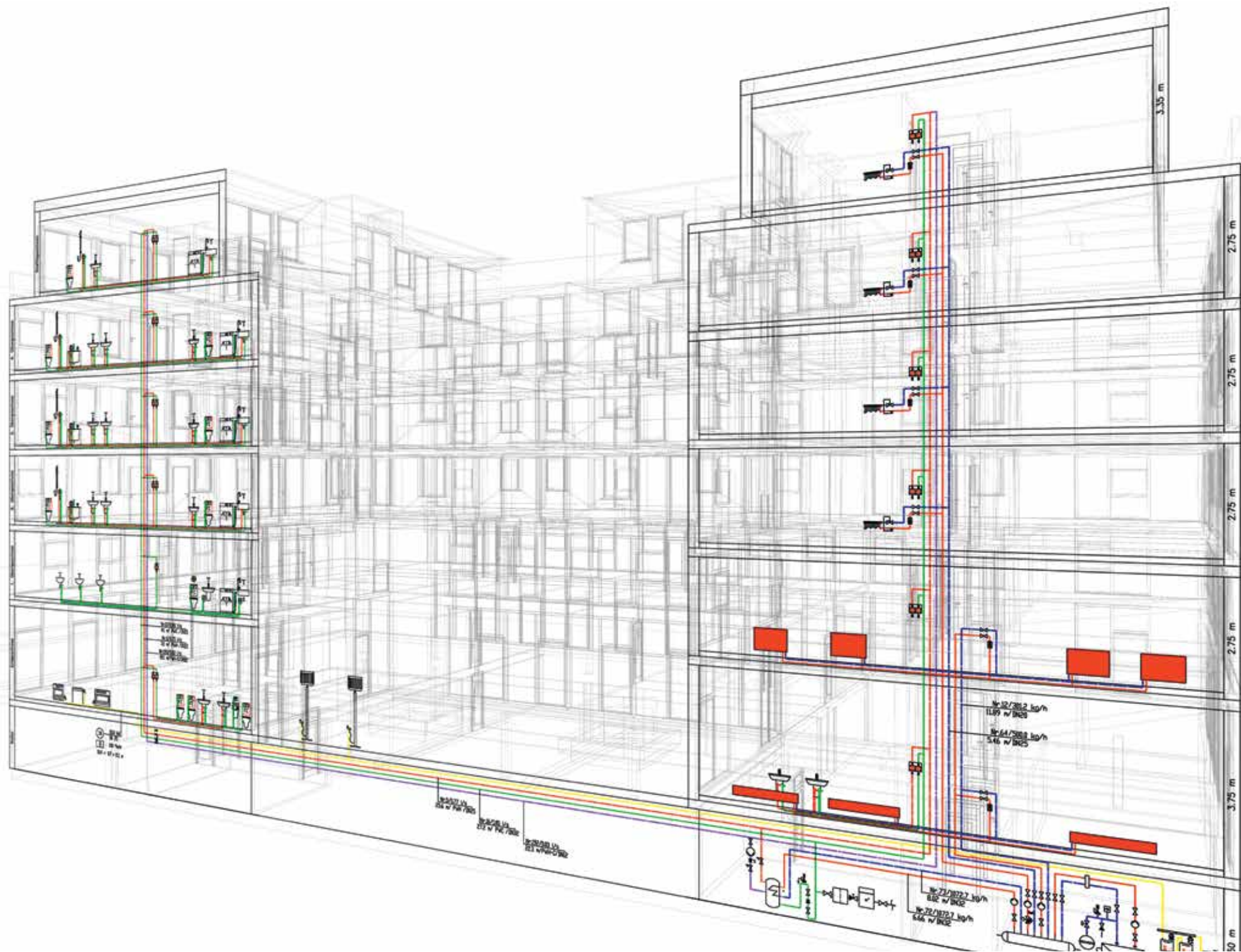
### Viptool Supports BIM

For optimal planning with BIM, you can use the 3D Pipeline Design module for realistic and functional 3D pipe networks made from millimetre-precise fittings. For a smooth data exchange your design can also be imported and exported using the IFC Import and Export Interface. IFC data is available for cross-industry export Planning as IFC Files.

### System Requirements

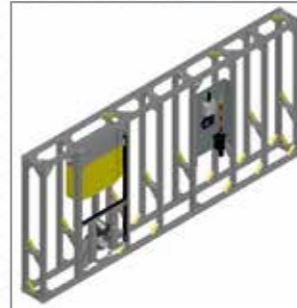
In order to work reliably with Viega Viptool Engineering your computer should meet certain minimum requirements. You can find out what these are at the currently at [viega.com.au](http://viega.com.au).



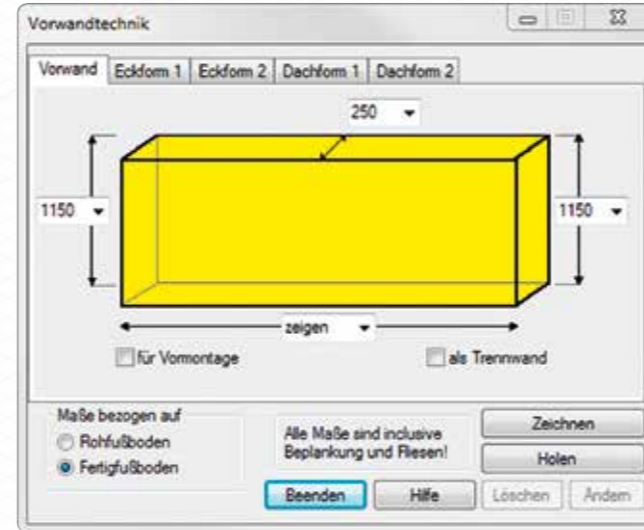


## Viptool CAD-Modul

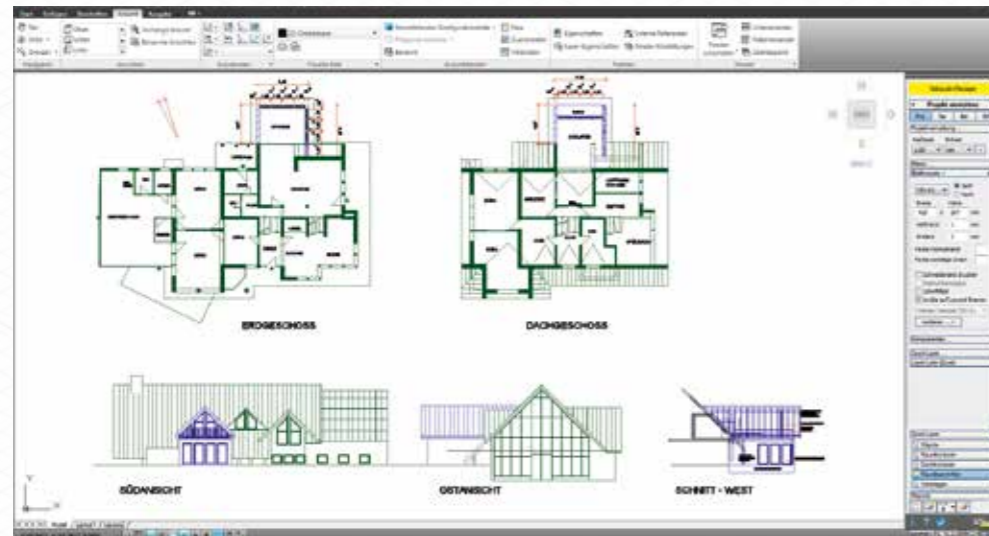
The Viptool CAD Module is specially designed for building services planning and enables fast and efficient work. Based on a current Autodesk® CAD platform it contains all the important tools for the planning and construction of building service installations. With extra options included specifically for technical building equipment, such as an optimised user interface for increased clarity, planning is simplified.



3D Pre-Wall Planning for a detailed pre-wall construction with Viega Prevista dry plus.



Input dialog for Pre-Wall Planning.



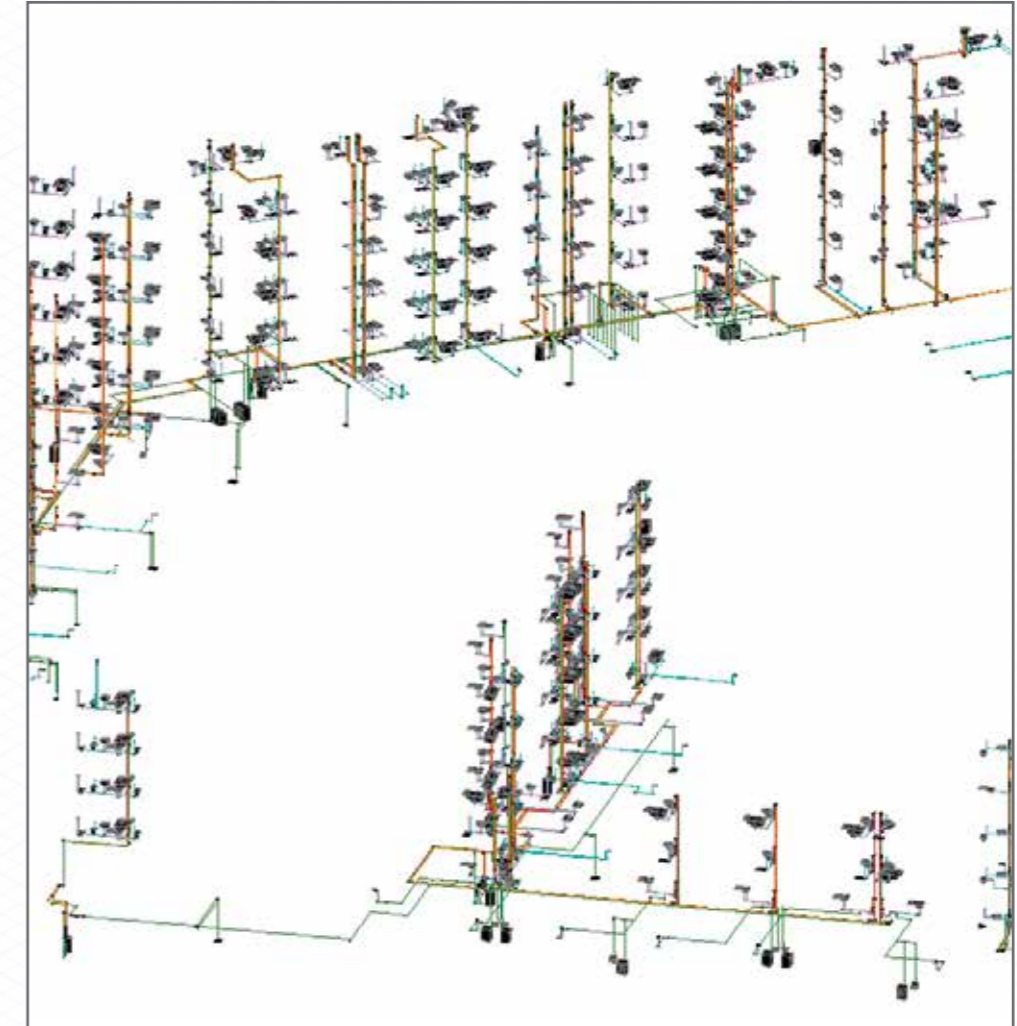
Viptool CAD Module including many useful drawing functions for technical building services.

## Viptool Piping

Viptool Piping is the optimal planning software for all buildings trades from design to execution. The user interface is practice-oriented and optimally supports your planning processes. It has extensive Symbol Libraries, Schema Generators and other powerful design tools that enable you to work in the shortest time, creating detailed plans. The calculations always include the up to date standards and regulations. In addition, you receive detailed material lists at the touch of a button - for example, for a call for tenders - and the highest planning security.

### Features in Overview

- Project Management
- 2D scheme and floor plan planning or 3D construction (isometry)
- Assistant-assisted user guidance
- Optionally combinable as an application for AutoCAD® or Viptool CAD module
- All trades directly accessible
- Individual work with the help of the character assistant
- Automatic connection / connection of cables and objects
- Powerful scheme generators
- Drawing and calculating as an integrated solution
- Recalculating pre-dimensioned or existing facilities
- Automatic notes and error reports
- Automatic labeling and updating
- Detailed parts lists of all components
- Visualization of calculation results
- Output of all calculation results, in addition transfer of parts list to Viptool Sales



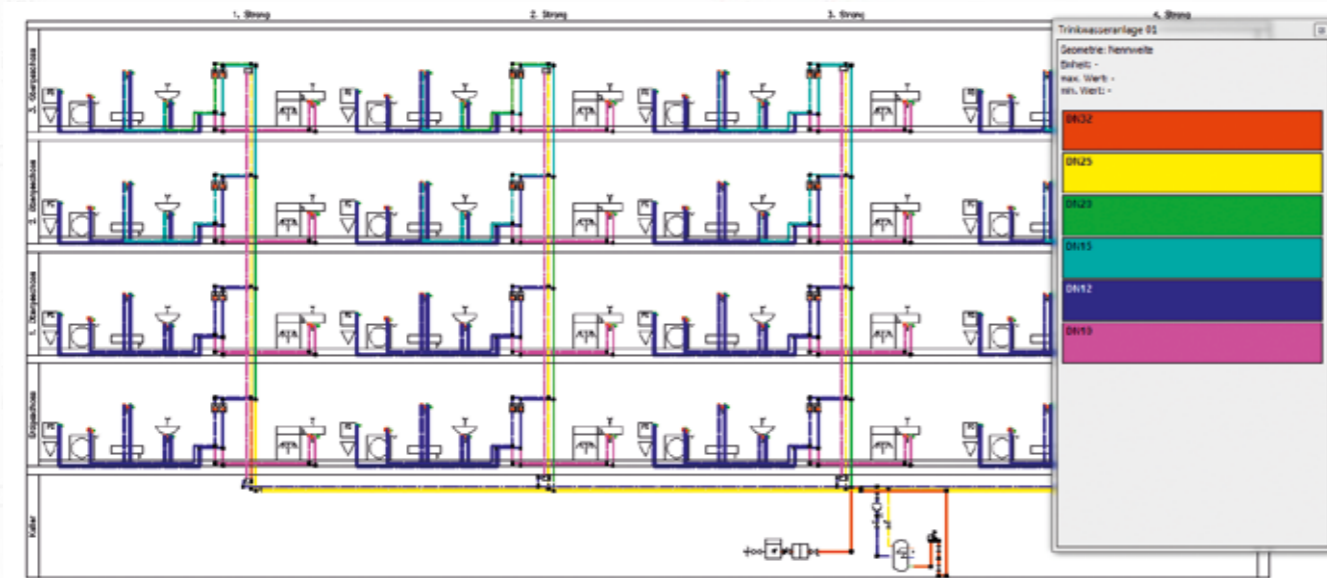
A 3D floor plan directly takes into account all real pipe lengths and thus ensures maximum planning accuracy.

## Drinking Water Calculation Module

Maintaining water quality in drinking water installations is a central task for the specialist planner. The Drinking Water Module's calculations unite all current standards and regulations, e.g. DIN 1988-200/300, with which the connection with the Viega pipe systems can make drinking water installations hygienic and economical in line with planning practical requirements.

### Drinking Water Calculation

- DIN 1988-300 incl. circulation
- Hydraulic adjustment over several circulation control levels including thermal disinfection
- Simultaneity factor for all legs of the journey individually selectable
- Consideration of usage units
- Assistant for the convenient definition of pipe systems, insulation, deciding on the type of cable, z. B. Cellar, strand or floor distribution
- Different pipe materials within one pipe network can be combined
- Multiple networks can be calculated in one drawing



Visualise and analyse results; shown here using the example of nominal diameters in the drinking water scheme.



Raxofix double wall disc for ring and row cables.

## Viptool Engineering-Software

Regular updates of your planning software are enormously important. They ensure that standards, rules and regulations and calculation methods are always up to date, and you are able to plan with reliability on the software. In addition, fundamental improvements in planning are made, for example in terms of user-friendliness, planning made simpler, and plans completed faster with more economic designs possible.

### Fully Automatic and Individually Adapted

With Viega's software maintenance you receive important updates annually and improvements of your Viptool engineering software package. The scope of updates is completely based on the individual Module of the respective computer. You can always receive precise information about current software maintenance on [viega.com.au](http://viega.com.au)

### The Performance Spectrum of Viptool Engineering Software Maintenance

- Updates Viptool CAD module
- Running capability as an application under all current AutoCAD® Versions
- Program improvements, e.g. new functions within individual modules
- Updating with regard to standards and directives
- Online updates during the year

### Aspects of the Software Maintenance Kept Current:

- Viptool CAD module
- Viptool piping for the modules: Drinking water, 3D pipe construction drainage, heating, gas, building manager as well as slot and breakthrough planning
- Viptool Building for the heating load module, IFC module

Updates and new program parts for the Cooling Load Calculations Module are offered separately.

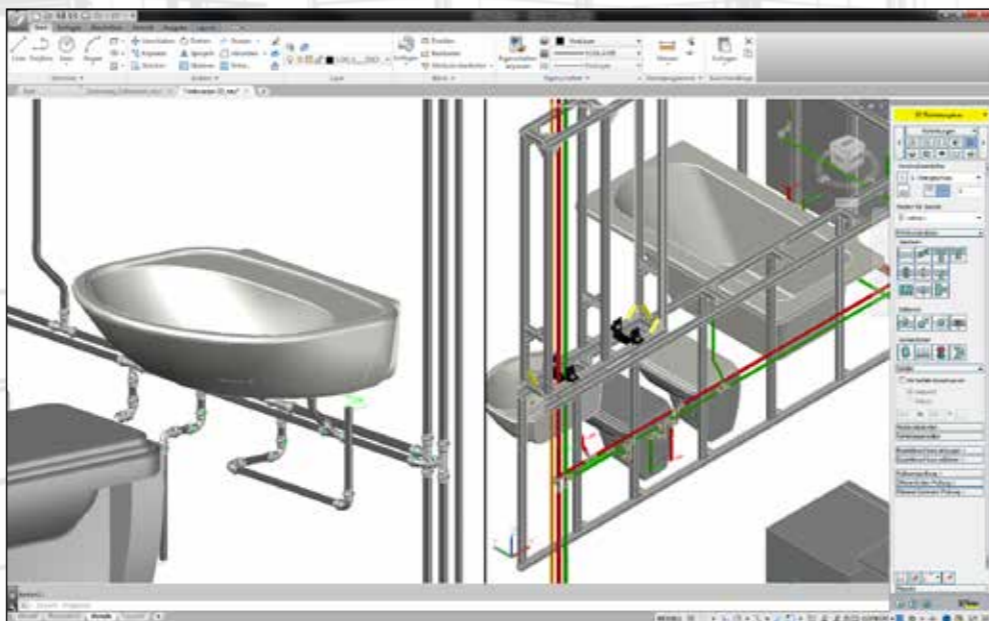
Current services for software maintenance can be found at [viega.com.au](http://viega.com.au)

## 3D Pipeline Design Module

In the Building Information Modeling (BIM) process, the cross-discipline planning using a common data model, 3D planning plays a central role. With realistic, functional models, feasibility can be checked and the compatibility with other models can be checked and trades maximised. With the module for 3D piping construction, complete three-dimensional and detailed construction of plants are achieved simply with just one click of an existing 1-line drawing. A real-time collision check shows critical areas, so that adjustments can be made during the planning process.

### 3D Pipeline Design

- Pipeline construction with pipe classes for millimetre-accurate production of fittings
- Subsequent insertion of components with matching transitions and flanges
- Real-time collision detection
- Automatic 3D generation of calculated 1-line drawings
- Distributor design for the generation of assemblies including pumps and fittings
- Configurators for tanks, plate heat exchangers and other equipment
- Predefine and show or hide insulation materials with transfer to the BOM



**Section: 3D piping design, detailed piping routing and connection situations taking into account real space requirements.**

## IfC Interface

The Industry Foundation Classes (IFC) are an open standard for the digital description of building models, which can be found in construction within the context of Building Information Modeling (BIM). All logical building structures such as window openings, walls, ceilings, technical building equipment, etc. as well as the associated properties are displayed in it. This allows complex 3D planning data, including all relevant descriptive attributes, to be mapped between different building software systems and thus trades. This provides precise prerequisites for holistic, cross-discipline, interdisciplinary and future-proof planning.

### Module IfC Import

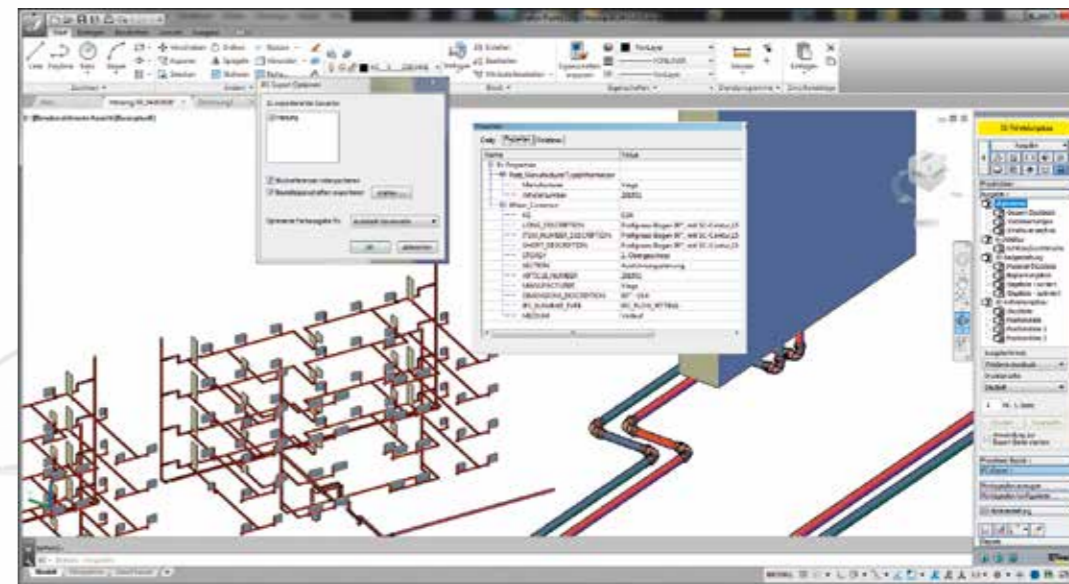
The module allows three-dimensional object data to be generated from an IFC file and used for further planning. Rooms and components from the architectural plans can thus be easily transferred to a heating load calculation with Viptool Building Manager and Viptool Building. Planning is thus not only faster and less complicated, but also more precise and safer. Apropos safe: When inputting, data is automatically checked. If there are any discrepancies, the user is informed via an information window, and possible help for correction is provided or, if possible, even automatically corrected directly. Errors in planning or exchange of data are practically impossible.

- Easy import of 3D object data from IFC files
- Direct heating load calculation with Viptool Building Manager and Viptool Building
- Automatic check of data during import

### Module IfC Export

The module records the components of all general technical building trades and makes them available for export as an IFC file. This does not only apply to the 3D-models themselves, but also the corresponding integrated metadata such as manufacturer, materials, dimensions etc. This enables a smooth and integrated exchange of data during planning in the BIM process.

- Holistic export of all technical building data as IFC file.
- Integration of 3D models including metadata



**An IfC export using the example of a heating system. Planning-specific properties and product data were exported for each object and made usable for open BIM planning.**

